



CD23 rabbit mAb(ABT128R)

Catalog No	YP-Ab-15490
Isotype	IgG
Reactivity	Human
Applications	IHC;IF
Gene Name	FCER2 CD23A CLEC4J FCE2 IGBF
Protein Name	CD23
Immunogen	Synthesized peptide derived from human CD23
Specificity	This antibody detects endogenous levels of CD23 at Human
Formulation	Liquid in PBS containing 50% glycerol, 0.5% BSA and 0.02% sodium azide.
Source	Polyclonal, Rabbit,IgG
Purification	The antibody was affinity-purified from Cell supernatant by affinity-chromatography using specific immunogen.
Dilution	IHC-p 1:100. IF 1:50-200
Concentration	1 mg/ml
Purity	≥90%
Storage Stability	-20°C/1 year
Synonyms	Low affinity immunoglobulin epsilon Fc receptor (BLAST-2;C-type lectin domain family 4 member J;Fc-epsilon-RII;Immunoglobulin E-binding factor;Lymphocyte IgE receptor;CD antigen CD23) [Cleaved into: Low affinity immunoglobulin epsilon Fc receptor membrane-bound form; Low affinity immunoglobulin epsilon Fc receptor soluble form]
Observed Band	
Cell Pathway	Cell membrane; Single-pass type II membrane protein. Cell membrane; Lipid-anchor. Secreted. Also exists as a soluble excreted form, sCD23.
Tissue Specificity	B-cell,Blood,
Function	function:This receptor has essential roles in the regulation of IgE production and in the differentiation of B-cells (it is a B-cell-specific antigen).,miscellaneous:There are two kinds of Fc receptors for IgE, which differ in both structure and function: high affinity receptors on basophils and mast cells and low affinity receptors on lymphocytes and monocytes.,online information:CD23,PTM:N- and O-glycosylated.,similarity:Contains 1 C-type lectin domain.,subcellular location:Also exists as a soluble excreted form.,
Background	

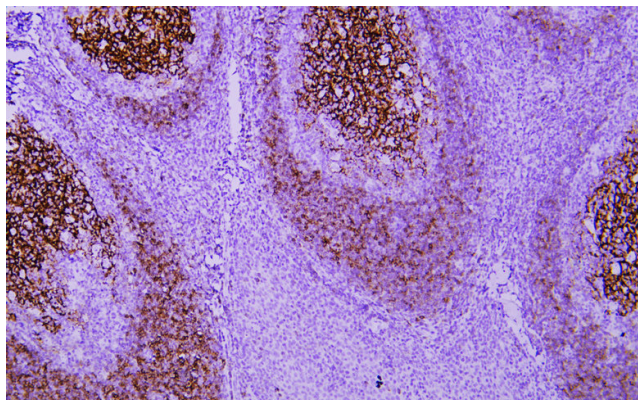
**matters needing attention**

Avoid repeated freezing and thawing!

Usage suggestions

This product can be used in immunological reaction related experiments. For more information, please consult technical personnel.

Products Images



Immunohistochemical analysis of paraffin-embedded human Tonsil. 1, Antibody was incubated at 4° overnight. 2, Citrate buffer of pH6.0 was used for antigen retrieval. 3, Secondary antibody was diluted at 1:200(room temperature, 30min).